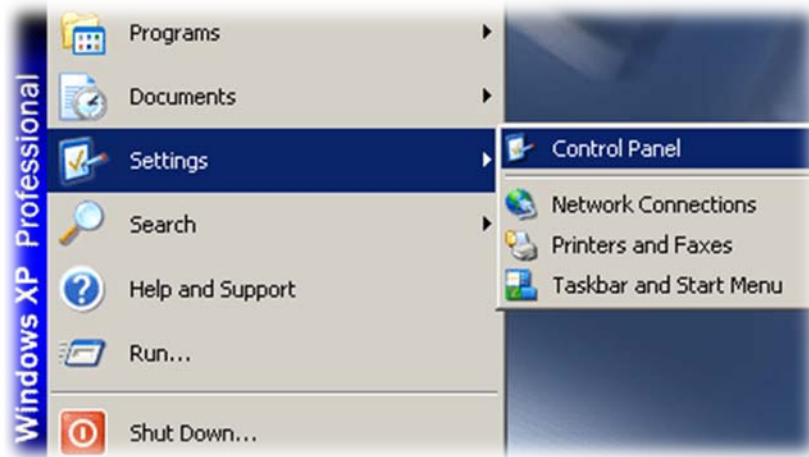


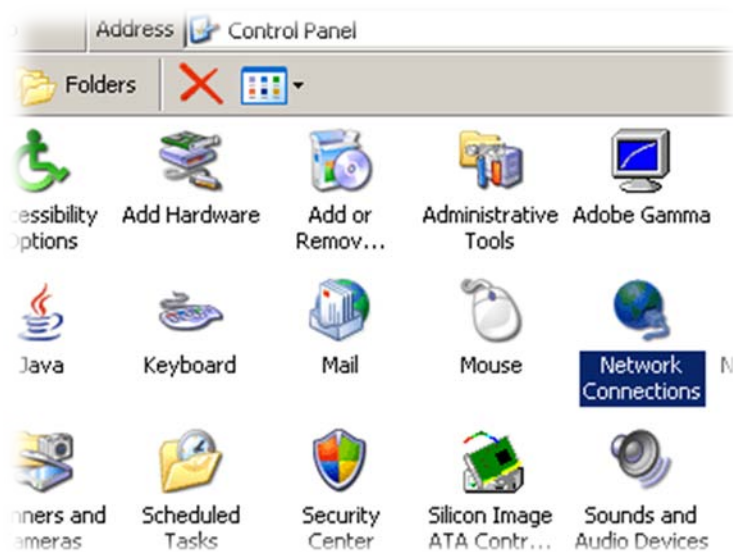
PPPoE – Windows XP

uputstvo za konekciju

Kliknite na **Start > Settings > Control Panel**.



U Control Panel-u kliknite na **Network Connections**.



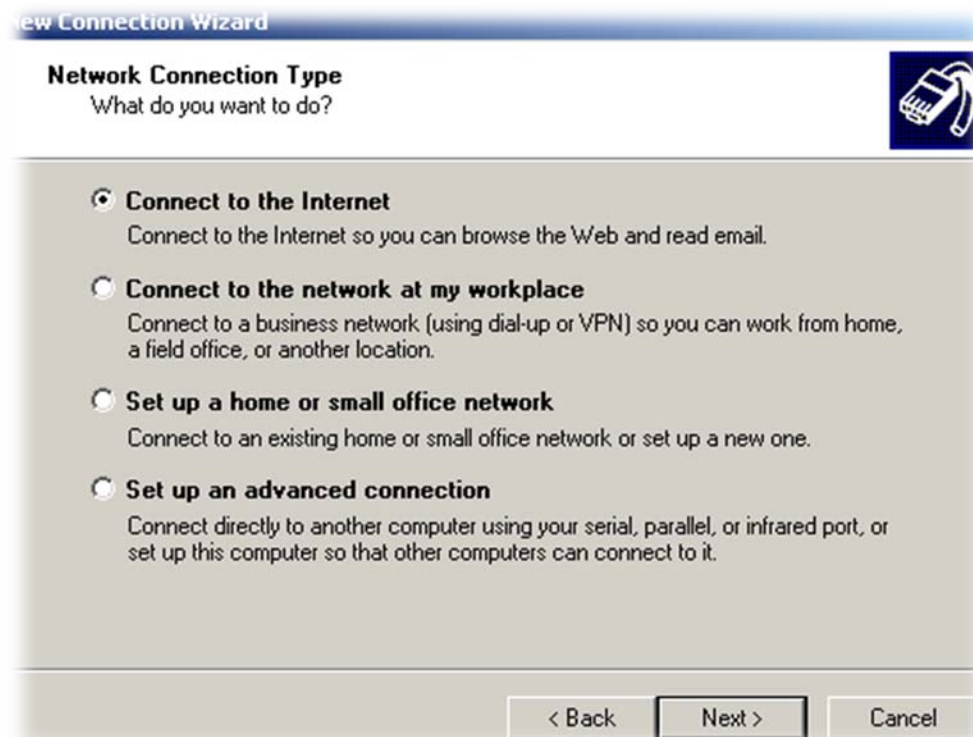
Kliknite na **File > New Connection**.



U prozoru **New Connection Wizard** kliknite na **Next**.



Čekirajte **Connect to the Internet** i kliknite na **Next**.



Čekirajte **Set up my connection manually** i kliknite **Next**.

Getting Ready

The wizard is preparing to set up your Internet connection.



How do you want to connect to the Internet?

Choose from a list of Internet service providers (ISPs)

Set up my connection manually

For a dial-up connection, you will need your account name, password, and a phone number for your ISP. For a broadband account, you won't need a phone number.

Use the CD I got from an ISP

< Back

Next >

Cancel

Čekirajte **Connect using a broadband connection that requires a user name and password** i kliknite **Next**.

Internet Connection

How do you want to connect to the Internet?



Connect using a dial-up modem

This type of connection uses a modem and a regular or ISDN phone line.

Connect using a broadband connection that requires a user name and password

This is a high-speed connection using either a DSL or cable modem. Your ISP may refer to this type of connection as PPPoE.

Connect using a broadband connection that is always on

This is a high-speed connection using either a cable modem, DSL or LAN connection. It is always active, and doesn't require you to sign in.

< Back

Next >

Cancel

U sledećem prozoru pod **ISP Name** upišite **MaksNet** i kliknite **Next**.

New Connection Wizard

Connection Name

What is the name of the service that provides your Internet connection?



Type the name of your ISP in the following box.

ISP Name

MaksNet

The name you type here will be the name of the connection you are creating.

< Back

Next >

Cancel

U sledećem prozoru upišite svoje korisničko ime i lozinku (password) i kliknite **Next**.

New Connection Wizard

Internet Account Information

You will need an account name and password to sign in to your Internet account.



Type an ISP account name and password, then write down this information and store it in a safe place. (If you have forgotten an existing account name or password, contact your ISP.)

User name:

korisnicko_ime

Password:

•••••

Confirm password:

•••••

- Use this account name and password when anyone connects to the Internet from this computer
- Make this the default Internet connection

< Back

Next >

Cancel

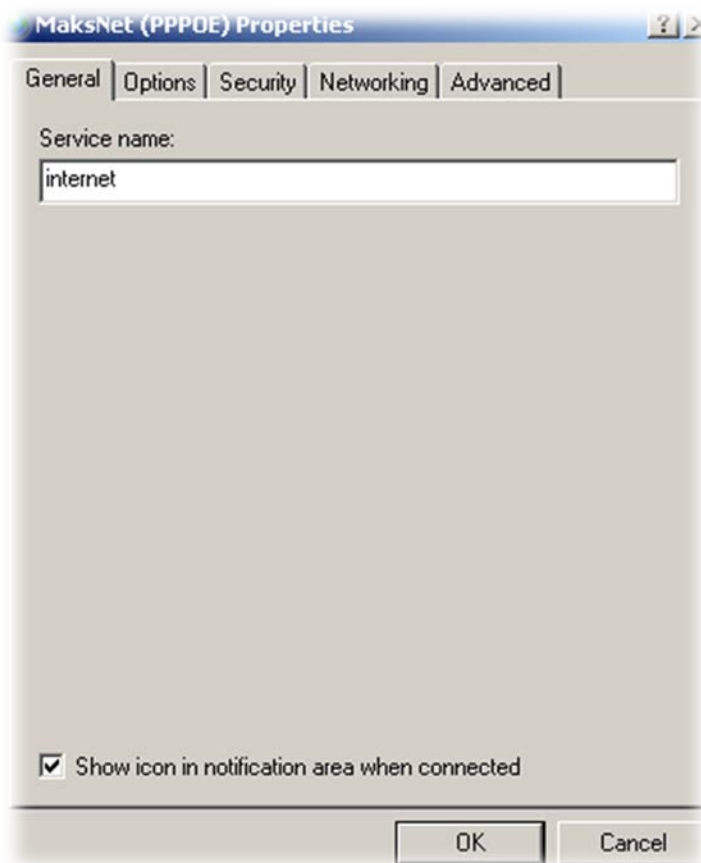
Čekirajte **Add a shortcut to this connection** to my desktop i kliknite **Finish**.



Nakon toga ce se pojaviti prozor **Connect MaksNet**. Kliknite na **Properties**.



Pod **Service name** upišite **internet** i kliknite **Ok**.



Kliknite **Ok** pa **Connect**.

