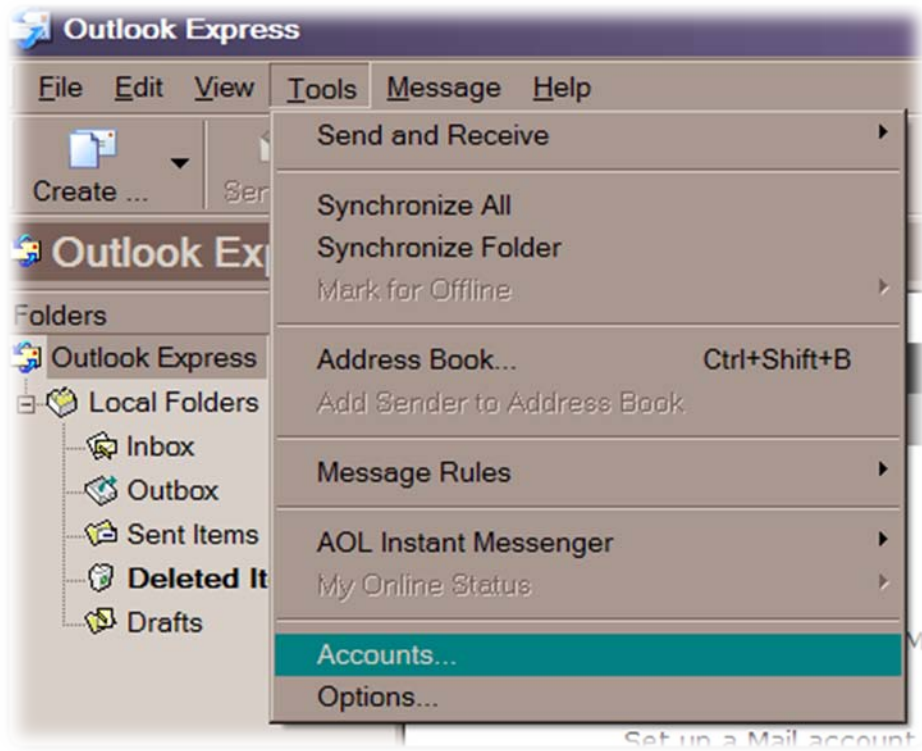


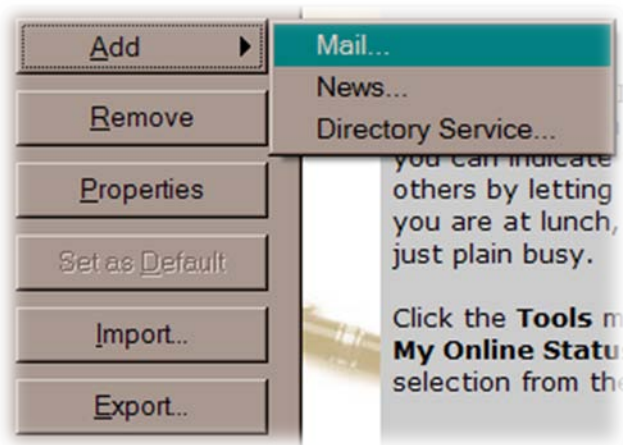
# Outlook Express

## uputstvo za podešavanje

Otvorite Outlook Express. Kliknite na **Tools** meni, i selektujte **Accounts...**



Izaberite **Add** a zatim kliknite na **Mail**.



Unesite Vaše ime i prezime u polje i zatim kliknite **Next**.

Internet Connection Wizard

Your Name

When you send e-mail, your name will appear in the From field of the outgoing message. Type your name as you would like it to appear.

Display name:

For example: John Smith

< Back   Next >   Cancel

Unesite Vašu **email** adresu i **lozinku**, kliknite **Next** zatim kliknite **Finish**.

Internet Connection Wizard

Internet Mail Logon

Type the account name and password your Internet service provider has given you.

Account name:

Password:

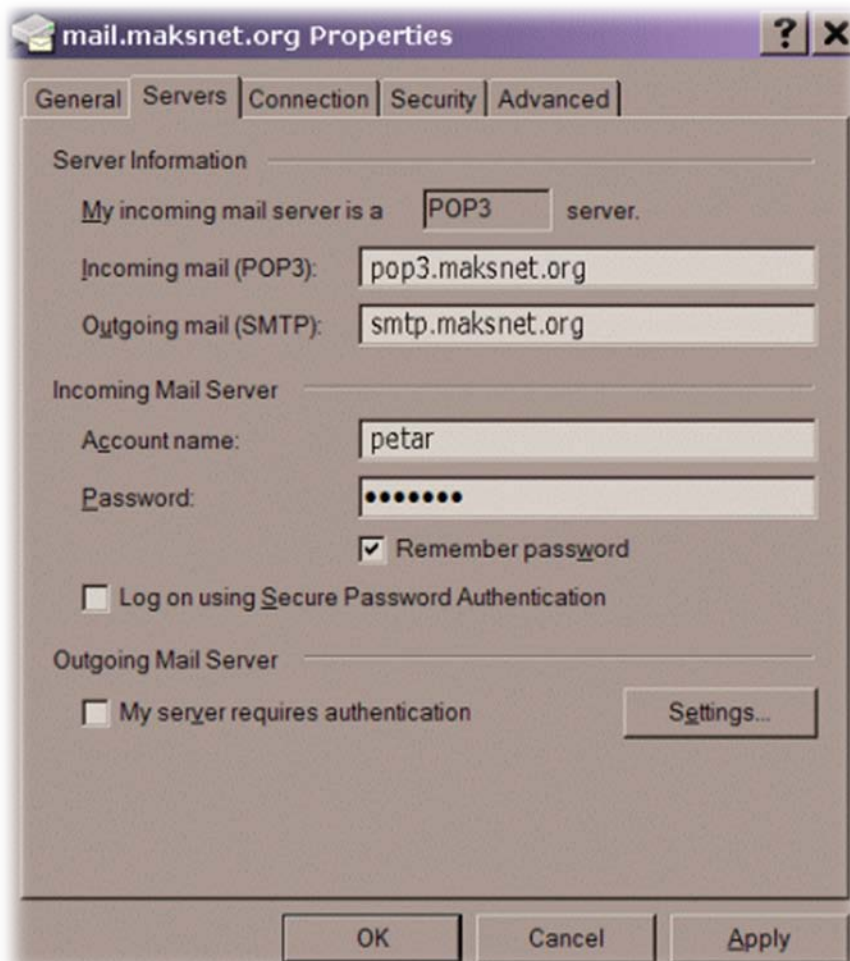
Remember password

If your Internet service provider requires you to use Secure Password Authentication (SPA) to access your mail account, select the 'Log On Using Secure Password Authentication (SPA)' check box.

Log on using Secure Password Authentication (SPA)

< Back   Next >   Cancel

POP3 i SMTP parametre upišite kao na primeru dole.



Kliknite **OK**, i zatim **Close**.