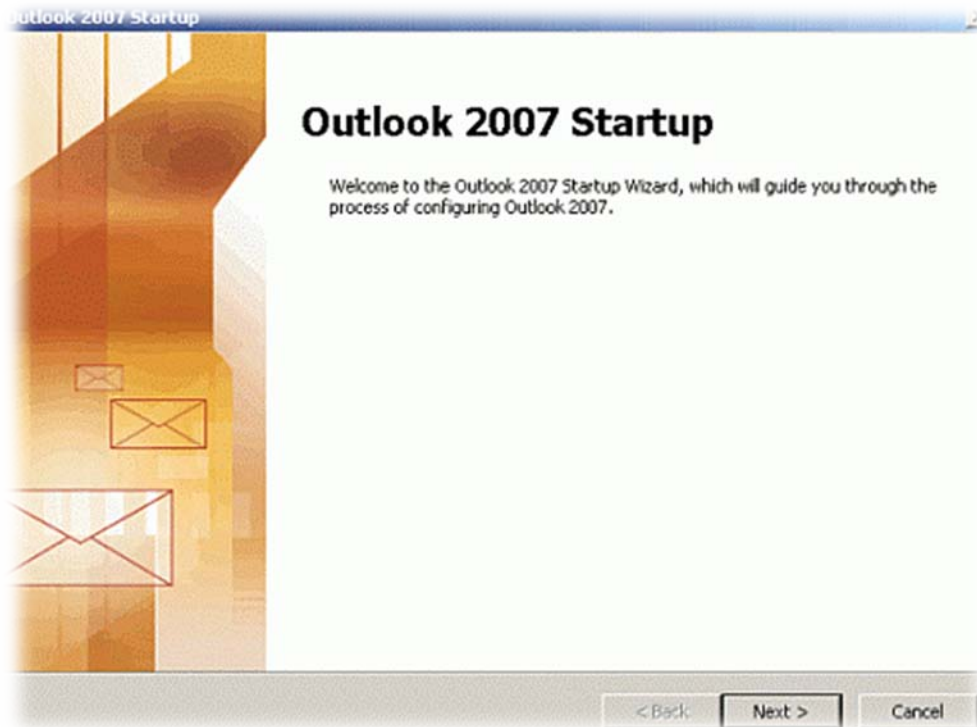


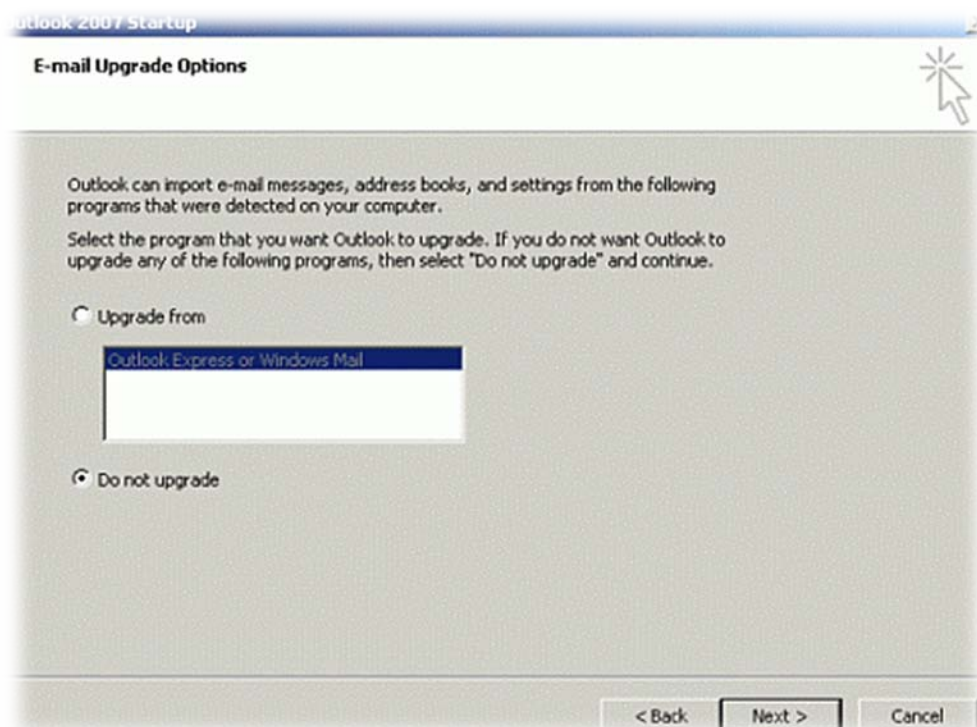
Outlook 2007

uputstvo za podešavanje

Pokrenite Microsoft Outlook 2007. Pojaviće se **Outlook 2007 Startup** prozor. Kliknite na **Next**.



Ukoliko ne želite da uvezete pisma i adrese iz Outlook Expressa ili uopšte ne koristite Outlook Express, čekirajte **Do not upgrade** i kliknite na **Next**.



Čekirajte **Yes** i kliknite **Next**.

Account Configuration

E-mail Accounts

You can configure Outlook to connect to Internet E-mail, Microsoft Exchange, or other E-mail server. Would you like to configure an E-mail account?

Yes
 No

< Back Next > Cancel

U sledećem prozoru čekirajte **Manually configure server settings or additional server types** i kliknite **Next**.

Add New E-mail Account

Auto Account Setup

Your Name:
Example: Barbara Senkovic

E-mail Address:
Example: barbara@contoso.com

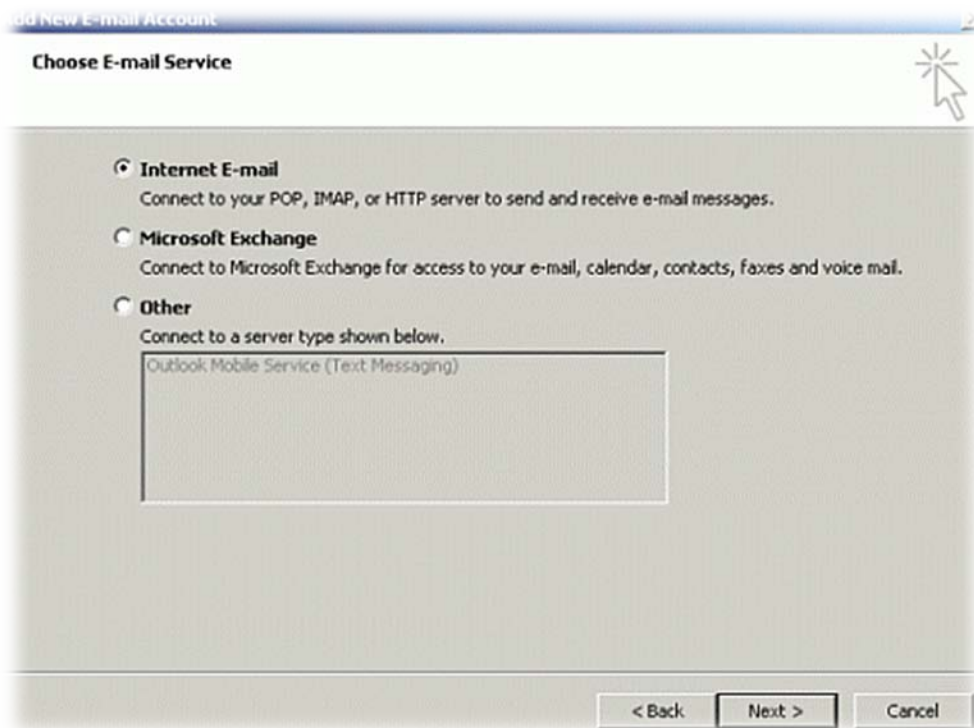
Password:

Retype Password:
Type the password your Internet service provider has given you.

Manually configure server settings or additional server types

< Back Next > Cancel

Izaberite **Internet E-mail** i kliknite **Yes**.



Popunite slobodna polja kao na primeru ispod i kliknite **Next**.

The screenshot shows the 'Test Account Settings' dialog box. It is divided into three main sections: 'User Information', 'Server Information', and 'Logon Information'.
User Information: 'Your Name:' is filled with 'Pera Peric'; 'E-mail Address:' is filled with 'pera@maksnet.org'.
Server Information: 'Account Type:' is a dropdown menu set to 'POP3'; 'Incoming mail server:' is filled with 'pop3.maksnet.org'; 'Outgoing mail server (SMTP):' is filled with 'smtp.maksnet.org'.
Logon Information: 'User Name:' is filled with 'pera'; 'Password:' is filled with '****'. There is a checked checkbox for 'Remember password' and an unchecked checkbox for 'Require logon using Secure Password Authentication (SPA)'.
On the right side, there is a text box with the text: 'After filling out the information, we recommend you test your account settings by clicking the Test Account Settings button below. (Requires Internet connection.)' Below this text is a button labeled 'Test Account Settings'.

Ukoliko ste sve ispravno popunili pojavaće se prozor kao na slici ispod. Za kraj kliknite na **Finish**.

Congratulations!

You have successfully entered all the information required to setup your account.

To close the wizard, click Finish.

[< Back](#)[Finish](#)