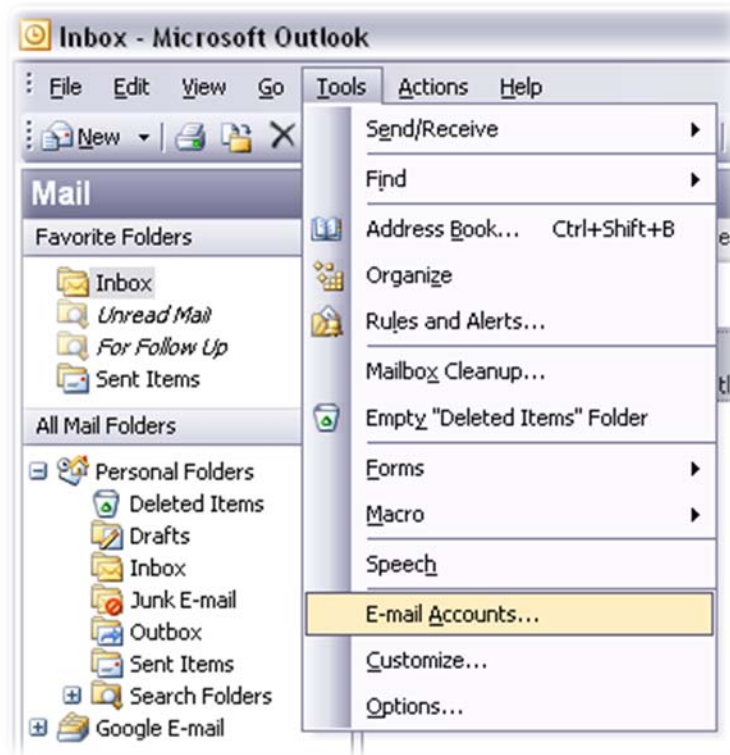


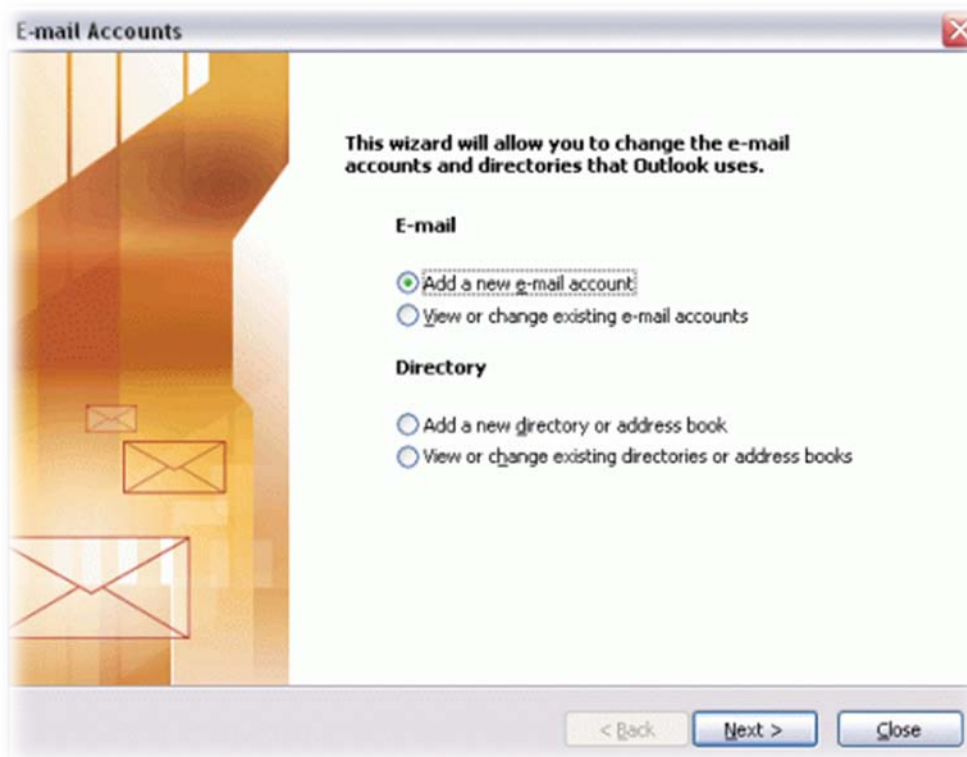
Outlook 2003

uputstvo za podešavanje

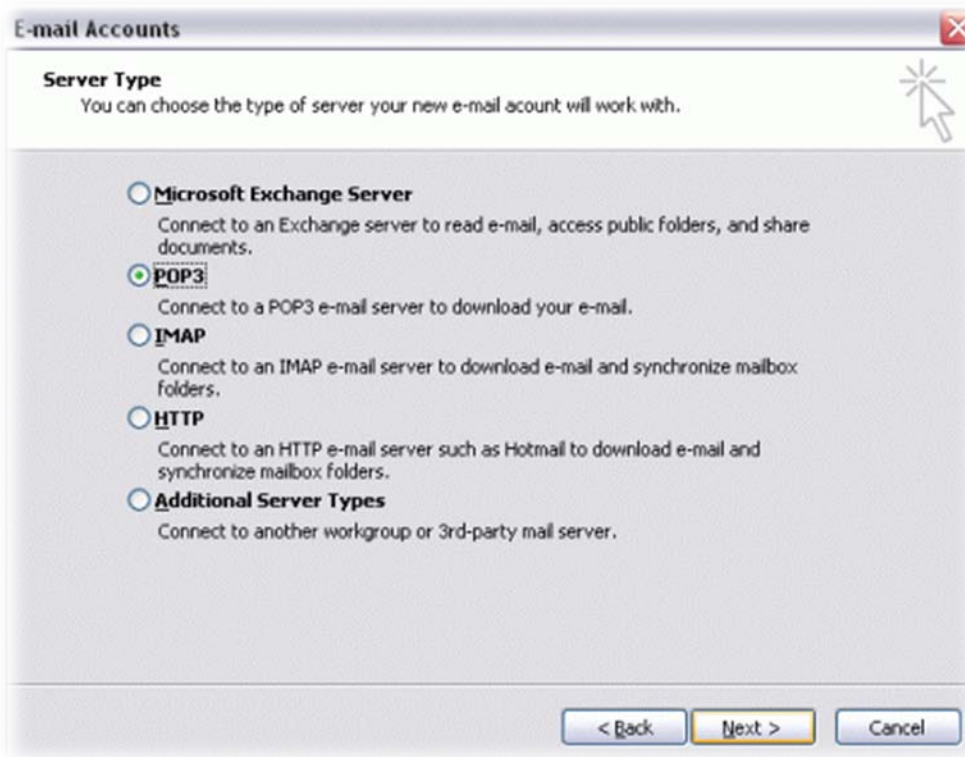
Otvorite Outlook 2003. Kliknite na **Tools** meni, i selektujte **E-mail Accounts...**



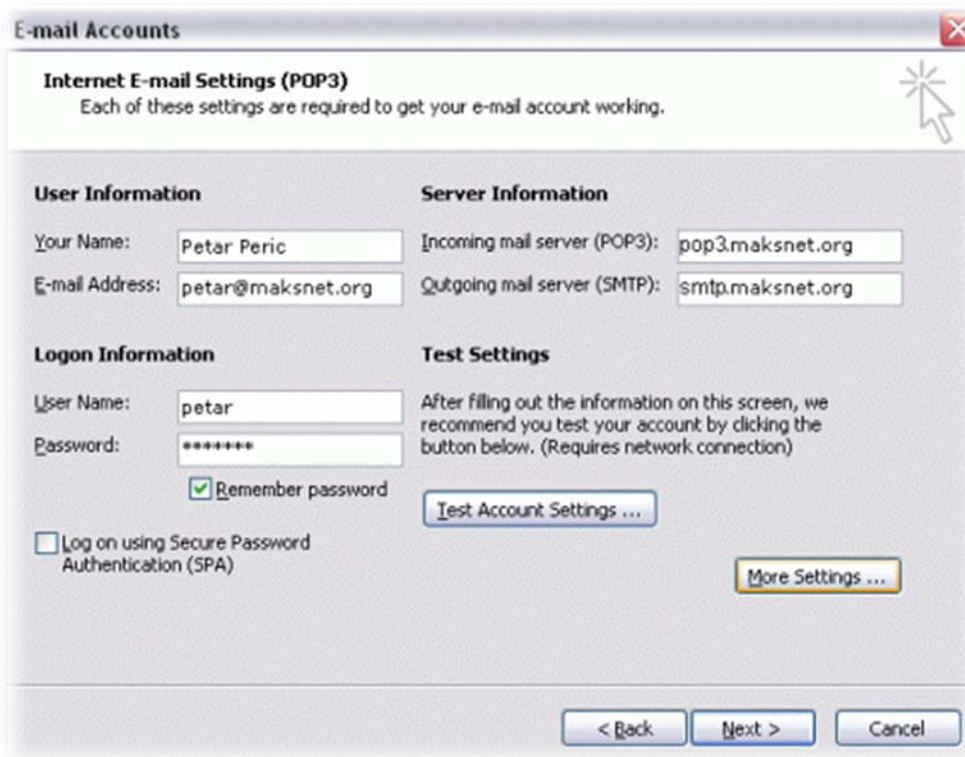
Izaberite **Add a new e-mail account**, zatim kliknite **Next**.



Izaberite **POP3** kao vaš tip servera, zatim kliknite **Next**.



Popunite neophodna polja da bi ste kreirli Vaš **email**:



Kliknite **More Settings...** zatim kliknite **Outgoing Server** tab.

Čekirajte **My outgoing server (SMTP) requires authentication** i izaberite **Use same settings as my incoming mail server**. Kliknite **OK**



Kliknite **Test Account Settings...** Ukoliko ste postupili po uputstvu u **inbox** će Vam stići test mail, kliknite **Close**. Kliknite **Next**, i zatim **Finish**.